

## **zCOST Management CCP-Tool (Capacity & Cost Planning)**

### **An interactive IBM zSeries Server Capacity & Financial Management Solution**

#### **CCP-Tool Introduction**

CCP-Tool is an interactive z/OS orientated solution that allows a Data Centre to perform IBM zSeries financial planning from a CPU capacity and associated [Workload License Charging \(WLC\)](#) software cost viewpoint.

#### **Why is CCP-Tool Required?**

IBM zSeries Mainframe environments are typically large capacity infrastructures comprising many images, sometimes isolating different workload types (E.g. Production, Development, Test, Etc.) and sometimes segregating by business application (E.g. Mission Critical, Non-Mission Critical), or perhaps some other reason. Proactive management of these hardware resources, especially from a cost viewpoint is sometimes performed in isolation of associated software usage considerations. Thus CCP-Tool provides an evolution of the traditional Capacity Planning discipline by integrating core z/OS software (E.g. z/OS, DB2, CICS, IMS, MQSeries) usage metrics with associated zSeries hardware resource usage (E.g. MSU):

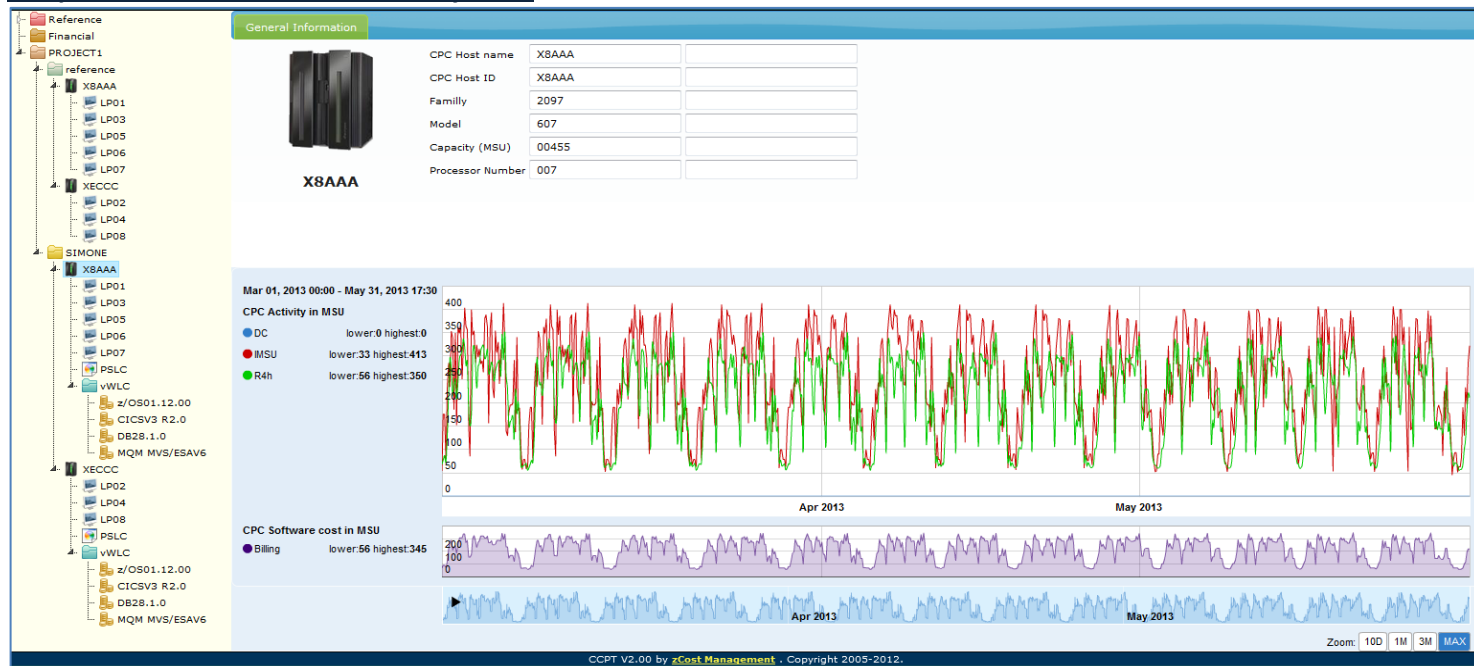
- Long-term Capacity Planning & Associated z/OS WLC Software Cost Control
- Generation of z/OS Software & Associated MSU Resource Cost Control Policies
- zSeries Server Resource (E.g. MSU) Sharing Optimization
- Financial Management Evolution via Simulation of Actual Usage & Workload Growth Data

#### **CCP-Tool Functionality Overview**

CCP-Tool is an easy to-install and easy-to use solution that primarily performs outbound of the z/OS environment, utilizing existing data sources to analyze and trend data that is presented graphically via a Web Browser GUI interface:

- Analysis of Standard WLC Sub-Capacity SMF Data (Type 70 & 89)
- Allows Capacity Planning Process to Define Planned or Unplanned Events
- Simulation of Countless Scenarios (E.g. Organic Growth, M&A, New Application, et al)
- Periodic Reconciliation & Revision of Capacity Plan vs. Cost Spend (E.g. Monthly, Quarterly)

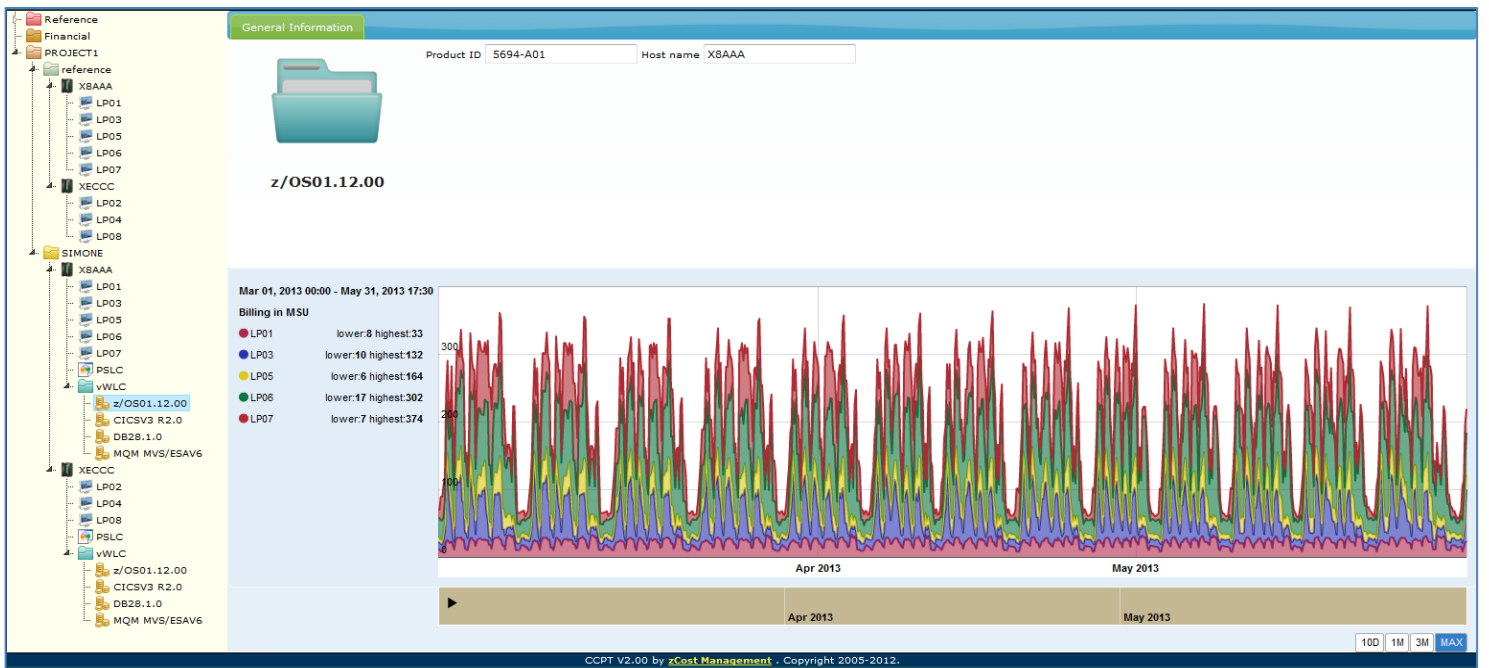
#### **Sample CPC-Tool Screen Shot: Activity View**



### Sample CPC-Tool Screen Shot: Aggregation View



### Sample CPC-Tool Screen Shot: Billing View



### CCP-Tool Benefits

The primary benefit of CCP-Tool is a common-sense long-term view of the primary zSeries resources, integrating actual and projected hardware and associated z/OS software usage, but most importantly, from a Financial Management perspective:

- Long-Term (E.g. 3 Years) zSeries Capacity & Associated Software Cost Planning Viewpoint
- Financial Planning & Associated Cost Control Policy Generation
- Optimized zSeries Resource (E.g. PR/SM) Policy Generation
- Capacity Planning Process Simplification & Evolution via Integration of Hardware/Software & Associated Usage/Cost Metrics